

**SHARPER IMAGE®**

---



## **HIGH VELOCITY AIR DUSTER OWNER'S GUIDE**



**MODEL  
MACH 02**



# CONTENTS

Important Safety Instructions.....	4
Product Information.....	10
How to Use.....	11
Cleaning & Storage.....	13
Troubleshooting .....	14
Warranty.....	15

# IMPORTANT SAFETY INSTRUCTIONS

## READ ALL INSTRUCTIONS BEFORE USING THIS APPLIANCE

This owner's guide and any additional inserts are considered part of the product. They contain important information about safety, use and disposal. Before using the product, please familiarize yourself with all operating and safety instructions. Please keep all documents for future reference and pass these documents on, together with the product, to any future owner. See [sihomecomfort.com](http://sihomecomfort.com) to view, download and print the most current version of these instructions.

**INTENDED USE:** This product is intended to dust off small to reach spaces only in the United States. This product is not intended for commercial or industrial use. The manufacturer assumes no responsibility for damage or injury due to unauthorized use or product modification. Failure to follow these directions will void the product warranty.

When using an electrical appliance, basic precautions should always be followed, including the following:

## **WARNING: Risk to Children and Impaired Persons**

Supervision is required during the installation, operation, cleaning and maintenance of this product by children 12 years of age and younger and anyone with reduced physical, sensory or mental capabilities. Children should be supervised to ensure that they do not play with the appliance, its parts and packaging material.

## **INSTALLATION WARNING—To reduce risk of fire, electrical shock and injury to persons, observe the following:**

- Do not leave appliance when plugged in. Unplug from outlet when not in use and before servicing.

- **WARNING –** To Reduce The Risk Of Electric Shock – Do not use on wet surfaces. Do not expose to rain. Store indoors.
- Do not allow to be used as a toy. Close attention is necessary when used by or near children.
- Use only as described in this manual. Use only manufacturer's recommended attachments.
- Do not run cord under carpeting. Do not cover cord with throw rugs, runners, or similar coverings. Do not route cord under furniture or appliances. Arrange cord away from traffic area and where it will not be tripped over. The cord should not hang over edges of counters or be placed where it can be crimped or closed in doors. Plug appliance into an easily accessible outlet so the product can be unplugged quickly during an emergency.

# **SAFE USE WARNING**—To reduce risk of fire, electrical shock and injury to persons, observe the following:

- Do not pull or carry by cord, use cord as a handle, close a door on cord, or pull cord around sharp edges or corners. Do not run appliance over cord. Keep cord away from heated surfaces.
- Do not unplug by pulling on cord. To unplug, grasp the plug, not the cord.
- Do not handle plug or appliance with wet hands or use product on wet surfaces.
- Do not put any object into openings. Do not use with any opening blocked; keep free of dust, lint, hair, and anything that may reduce air flow.
- Keep hair, loose clothing, fingers, and all parts of body away from openings and moving parts.
- Turn off all controls before unplugging.
- Use extra care when cleaning on stairs or ladders.
- Do not use near flammable or combustible liquids, such as gasoline, or use in areas where they may be present.
- Do not use with a damaged cord or plug. If appliance is not working as it should, has been dropped, damaged, left outdoors, dropped into water, or after dropping has loose parts, return it to a service center. To avoid risk of electrical shock, do not attempt to repair or replace parts. Only original replacement parts may be used. If the power cord is damaged, it must be replaced by the manufacturer, its service agent, or similarly qualified persons in order to avoid a hazard. Contact Sharper Image Consumer Service at 833-800-8669 (phone)

or help@sihomecomfort.com (email) for further instructions about replacement and repair.

- Before moving, repositioning, servicing, cleaning and when not in use, use the product controls to turn off the power and then unplug. To disconnect from outlet, grasp and pull only the plug. Also, power off and unplug if the product will be left unattended for an extended period of time or during electrical storms.
- Connect to a properly grounded outlet only. See Grounding Instructions.
- Use only three-wire outdoor extension cords that have three-prong grounding plugs and grounding receptacles that accept the appliance's plug.

- **WARNING** – To reduce the risk of personal injury due to a loose electrical connection between the appliance's plug and extension cord, firmly and fully attach the appliance plug to the extension cord. Periodically check the connection while operating to ensure it is fully attached. Do not use an extension cord that provides a loose connection. A loose connection may result in overheating, fire, and increases the risk of a burning.

## **GROUNDING INSTRUCTIONS:**

- This appliance must be grounded. If it should malfunction or breakdown, grounding provides a path of least resistance for electric current to reduce the risk of electric shock. This appliance is equipped with a cord having an equipment-grounding conductor and

grounding plug. The plug must be inserted into an appropriate outlet that is properly installed and grounded in accordance with all local codes and ordinances.

- **WARNING** – Improper connection of the equipment-grounding conductor can result in a risk of electric shock. Check with a qualified electrician or service person if you are in doubt as to whether the outlet is properly grounded. Do not modify the plug provided with the appliance – if it will not fit the outlet, have a proper outlet installed by a qualified electrician.
- This appliance is for use on a nominal 120-V circuit and has a grounding attachment plug that looks like the plug illustrated in sketch A in Figure 68.1. Make sure that the appliance is connected to an outlet having the same configuration as the plug. No adaptor should be used with this appliance.

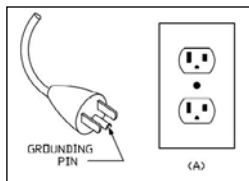


Figure 68.1

- A loose fit between wall outlet (receptacle) and plug may cause overheating and distortion of the plug. Discontinue use of the product



in this outlet. Contact a qualified electrician to replace loose or worn outlets.

- **NOTE:** You are encouraged to wear eye and ear protection, as debris can fly up in any direction, and loud prolonged activities may damage your hearing.

## **SERVICING WARNING—To reduce risk of fire, electrical shock and injury to persons, observe the following:**

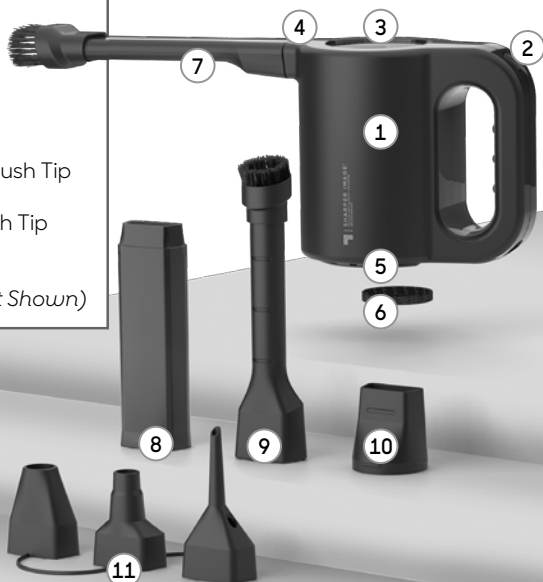
- Clean your product regularly, only as is instructed in this manual. Prior to cleaning, turn off the power on your product and unplug. Do not use gasoline, thinners, solvents, ammonias or other chemicals for cleaning. Refer to the CLEANING instructions provided.
- Do not open appliance housing. To avoid risk of shock, all service and/or repairs must be done by a Sharper Image Authorized Service Center.

## **SAVE THESE INSTRUCTIONS**

# PRODUCT INFORMATION

Your product includes the following:

- 1 Air Duster
- 2 On/ Off Button
- 3 LED Light
- 4 Air Outlet
- 5 Air Inlet
- 6 Inlet Dust Filter
- 7 Wide Nozzle with Brush Tip
- 8 Extension Nozzle
- 9 Jet Nozzle with Brush Tip
- 10 Deflate Adapter
- 11 Inflate Adapters
- 10' Power Cord (Not Shown)



# HOW TO USE

## POWER ON / OFF

1. Touch (⏻) to power unit on and off. LED light will turn on.
2. There are two speeds: HIGH and LOW.
3. Touch (⏻) to change speeds, then touch (⏻) again to power off.
4. Attach desired choice of included attachment to Air Outlet.

**NOTE: Do not use attachments not intended for use with the Air Duster. Only use attachments recommended or sold by the manufacturer.** Do not operate without filter installed, use only filter provided with your product.



## ATTACHMENTS

The air **Inlet Duster Filter** is installed in the bottom of the product in the **Air Inlet**.



Always keep your filter installed and only replace it with filters provided by the manufacturer. See **CLEANING INSTRUCTIONS** for more details.

The **Jet Nozzle**, **Wide Nozzle**, and **Extension Nozzle** can be used for a wide range of jobs. Attach the nozzle by pushing it securely onto the **Air Outlet**.

Make sure accessories are secured on the unit and point to a safe area before turning on the unit.

### INFLATE / DEFLATE ATTACHMENTS

When using the **Inflate Adapters**, pick the right adapter for the job and secure the adapter to the **Air Outlet**.

When you are ready to deflate, attach the **Deflate Adapter** to the bottom of the product and twist clockwise into the locked position. Once in place, attach the appropriate **Inflate Adapter** to the **Deflate Adapter**.



# CLEANING & STORAGE

**NOTE:** Do not store outdoors.

Your Air Duster will need regular cleaning. The Air Duster has no user serviceable parts inside and cannot be opened for cleaning. Never clean the product in any manner other than instructed in this owner's guide.

**NOTE:** The motor is permanently lubricated and requires no oiling.

1. Power off and unplug the unit prior to cleaning.
2. Dust or wipe unit and attachments with a damp cloth.
3. You may clean the nozzle attachments by rinsing them thoroughly in water. Make sure all attachments are dry either by air or using the Air Duster before reinstalling. **NOTE:** Attachments are **NOT** dishwasher safe.
4. Check to ensure the Air Inlet and outlet are clean and remove any dust or objects that could block the inlet or outlet.
5. There is one filter in the bottom of the product in the Air Inlet. To ensure the best performance, clean or replace the filter frequently. To clean the filter, rinse filter under water and allow to completely air dry before reinstalling. For replacement, please call Consumer Service at 833-800-8669.

During extended periods of non-use, you may choose to store your Air Duster. To ensure long life of the product, it is recommended to store your Air Duster by following these instructions:

1. Unplug product and bundle cord loosely.
2. Cover, or place back in retail carton if available. This prevents Air Duster from accumulating dust over time.
3. Store Air Duster in cool and dry location.

# TROUBLESHOOTING

PROBLEM	POSSIBLE CAUSE AND SOLUTION
The unit fails to power on.	Unit is not plugged in.
	Unit is damaged or in need of repair. Cease usage and unplug. Contact Consumer Service for assistance.
	The outlet is worn or damaged. Try another outlet or contact a qualified electrician.
Airflow is weak or slow.	Air Inlet or air outlet is blocked. Remove blockage and clean the filter and nozzle attachment. See CLEANING & STORAGE.
	Unit is set to a low speed setting. Adjust to a higher speed setting.
Nozzle attachment falls off.	The nozzle attachment is not properly installed. See HOW TO USE and make sure attachment is secure before use.



# WARRANTY

If you're not satisfied with this product, let us know.

Vornado Air, LLC warrants to the original consumer or purchaser this Sharper Image® Product ("Product") is free from defects in material or workmanship for a period of two (2) years from the date of purchase. If any such defect is discovered within the warranty period, Vornado, at its discretion, will repair or replace the Product at no cost.

For warranty or repair service: Call 833-800-8669 or email [help@sihomecomfort.com](mailto:help@sihomecomfort.com) to obtain a Return Authorization ("RA") form. Please have or include your Product's model number and serial number, as well as your name, address, city, state, zip code and phone number when contacting Vornado for warranty service. To file a contactless warranty claim, visit [www.sihomecomfort.com/contact](http://www.sihomecomfort.com/contact).

After receiving the RA form, ship your Product to: Vornado Air LLC Attn: Warranty & Repair 415 East 13th Street Andover, KS 67002. For your convenience, please have your model number and serial number when contacting Vornado with service inquiries. To assure proper handling, packages must be clearly marked with the RA number. Packages not clearly marked with the RA number may be refused at the receiving dock. Please allow 1-2 weeks for repair and return of your Product after the Product is received.

Repairs not covered by the warranty or outside the warranty period will require a fee to cover the cost of materials, labor, handling and shipping.

This warranty does not apply to defects resulting from abuse of the Product, modification, alteration, mishandling, improper maintenance, commercial use or repair or service of the Product by anyone other than Vornado; damages which occur in shipment or are attributed to acts of God. Improper product use, which includes using

an external device that alters or converts the voltage or frequency of electricity, or shipping a Vornado product to a country not intended for use will void all warranties. Any unauthorized product modification, repair by unauthorized repair center, or use of non-approved replacement parts is not recommended and any consequences will not be covered by support services or product warranties. The product warranty will be honored only on models that are being used in the country intended. REPAIR OR REPLACEMENT AS PROVIDED UNDER THIS WARRANTY IS THE EXCLUSIVE REMEDY OF THE CONSUMER. VORNADO SHALL NOT BE LIABLE FOR ANY INCIDENTAL OR CONSEQUENTIAL DAMAGES FOR BREACH OF ANY EXPRESS OR IMPLIED WARRANTY ON THIS PRODUCT. EXCEPT TO THE EXTENT PROHIBITED BY APPLICABLE LAW, ANY IMPLIED WARRANTY OF MERCHANTABILITY OR FITNESS FOR A PARTICULAR PURPOSE ON THIS PRODUCT IS LIMITED IN DURATION TO THE DURATION OF THIS WARRANTY. Some states do not allow the exclusion or limitation of incidental or consequential damages, or allow limitations on how long an implied warranty lasts, so the above limitations or exclusions may not apply to you. This warranty gives you specific legal rights, and you may have other rights that vary from state to state. The manufacturer assumes no responsibility for damage caused by failure to follow these instructions or improper product use. Any such actions will invalidate the product warranty.

All company names and product names are trademarks of their respective owners. © All rights reserved. All technical information, data, and instructions for the installation, connection, and operation contained in these instructions for use correspond to the latest available information at time of printing. The contents of this manual may differ slightly from the actual product. Observe any additional supplements.

©2023 Vornado Air LLC, Andover, Kansas 67002 USA.

Specifications subject to change without notice.

Sharper Image® name and logo are registered trademarks.

Manufactured, marketed and distributed under license by Vornado Air LLC, Andover, Kansas 67002.

Manufactured in China.

U.S. Patents Pending.

Sharper Image® Distributed under license by Vornado Air LLC, Andover, Kansas 67002.



# SHARPER IMAGE®

833.800.8669 | [sihomecomfort.com](http://sihomecomfort.com) | [help@sihomecomfort.com](mailto:help@sihomecomfort.com)